

# Ready for new ideas ...



**Dear guests, dear friends!**

Nowadays gathering and providing information has become more important than ever. That is why it is my pleasure to welcome all of you with an interest in knowing our town as much as possible on this website which will keep on developing and updating.

I believe that this presentation of Michalovce will find its favour with the public, as well as help mainly business enterprises to get to know our town. We will take pleasure in innovating and updating this website also thanks to the suggestions of our citizens, or businesses established in the town, as well as those considering Michalovce as a location of their enterprises.

Last but not least we believe this presentation will also help us address all those business enterprises and convince them that Michalovce is a convenient location for their investments because besides the nice town, pretty nature, and the vicinity of tourist destinations, we can offer hard-working and kind-hearted people of high qualities.

We look forward to meeting you, as well as to our cooperation and good ideas!

**Viliam Zahorčák**  
Town Mayor



The town is situated in the heart of Zemplín region, it is the administrative centre of the district and the centre of the south-east region of Slovakia. It is a gateway to the holiday resort of the lake of Zemplínska šírava. The banks of the Laborec River became home of the first settlers seven thousand years ago. The strategic position of the town gave the bases for the emergence of the traditional and classical crafts, business, and later the industrial production in the fields of clothing, construction, ceramics, engineering, electrical technology and food-processing.

# Contents:

- Town history, present days, geography, demography
- Educational structure of citizens, infrastructure of education
- Infrastructure of healthcare
- Unemployment, average monthly income
- Financial institutions
- Foreign investors
- Possibilities of industrial development



## Town history

The oldest written record of the town comes from 1244, mentioning Michalovce as the settlement – feudal possession of the Sztáray aristocrat family. In the 15th century Michalovce became the most important market centre out of 12 towns situated in the East Slovak Lowland.

The 19th century brought a significant development of the town. In 1828 there were 49 craftsman workshops representing all 22 kinds of crafts production with the crafts licences carrying out their production in the region of Zemplín.



## Present days

At present Michalovce is the centre of the Zemplín region, the centre of the local state and public administration, as well as the centre of financial and commercial institutions.



## Geographical location and area

The town location provides ideal conditions for its communication links to the transport roads of east-west direction with international importance (E50). Michalovce is situated on the most important **thoroughfare road leading to Ukraine** (border distance is 30 km). The distance to the borders with Hungary is 54 km, and the distances to the important Slovak centres are - 60 km from Košice, 500 km from Bratislava.

The greater part of the town area lies in **the altitude of 114 metres above sea level**. Michalovce has a warm climate with average temperature of 9 - 10°, average daylight in the Michalovce area is 2,200 hours a year with 50 summer days.

The **town area of 5,280.8 ha** forms a part of East Slovak Lowland. The town surroundings are characterized by fertile flatlands, and the Vihorlat Hills of volcanic origin rising in the north-east to the altitude of 1,075 metres above sea level.

The water reservoir Zemplínska Šírava, which is used as a destination for recreation, is located in the close vicinity of the town.



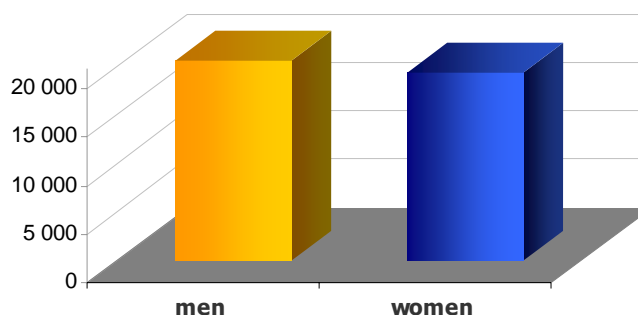
## Demography

In 2012 the town of Michalovce had **39,811 citizens** consisting of:

**men** – 19 275

**women** – 20 536

*(Municipal Authority data issued  
on 1 January 2012)*



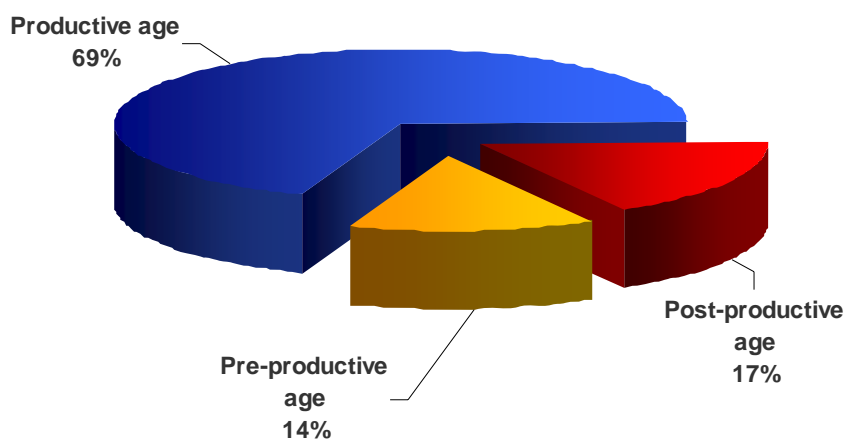
## Age structure of citizens

Pre-productive age (0 –14 years old) - 5 536

Productive age (15 – 60 years old) - 27 404

Post-productive age (over 60 years old) - 6 871

*(Municipal Authority data issued on 1 January 2012)*



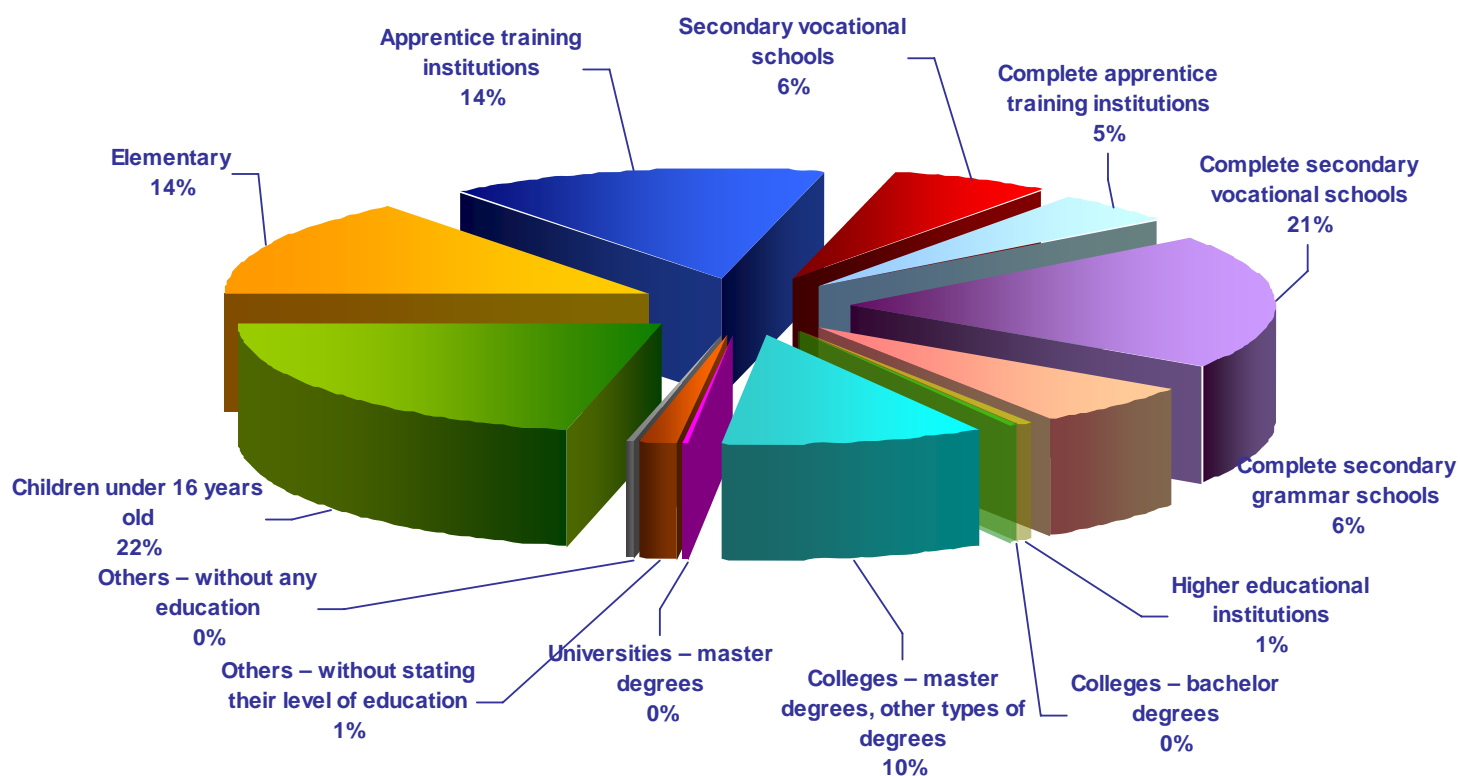


## Town citizens - structure of education

**Citizens structure of education according to the highest level of education**

Level of education (School education)	The town of Michalovce		
	men	women	total
Elementary	2 189	3 530	5 719
Apprentice training institutions (without complete school leaving exams of A-levels)	3 353	2 374	5 727
Secondary vocational schools (without complete school leaving exams of A-levels)	1 387	1 142	2 529
Complete apprentice training institutions (with complete school leaving exams of A-levels)	1 142	692	1 834
Complete secondary vocational schools (with complete school leaving exams of A-levels)	3 048	4 755	7 803
Complete secondary grammar schools	930	1 657	2 587
Higher educational institutions	99	128	227
Colleges – bachelor degrees	49	92	141
Colleges – master degrees, other types of degrees	2 202	1 722	3 924
Universities – master degrees	112	60	172
Others – without stating their level of education	293	248	541
Others – without any education	16	42	58
Children under 16 years old	4 455	4 094	8 549

(Statistical Office)



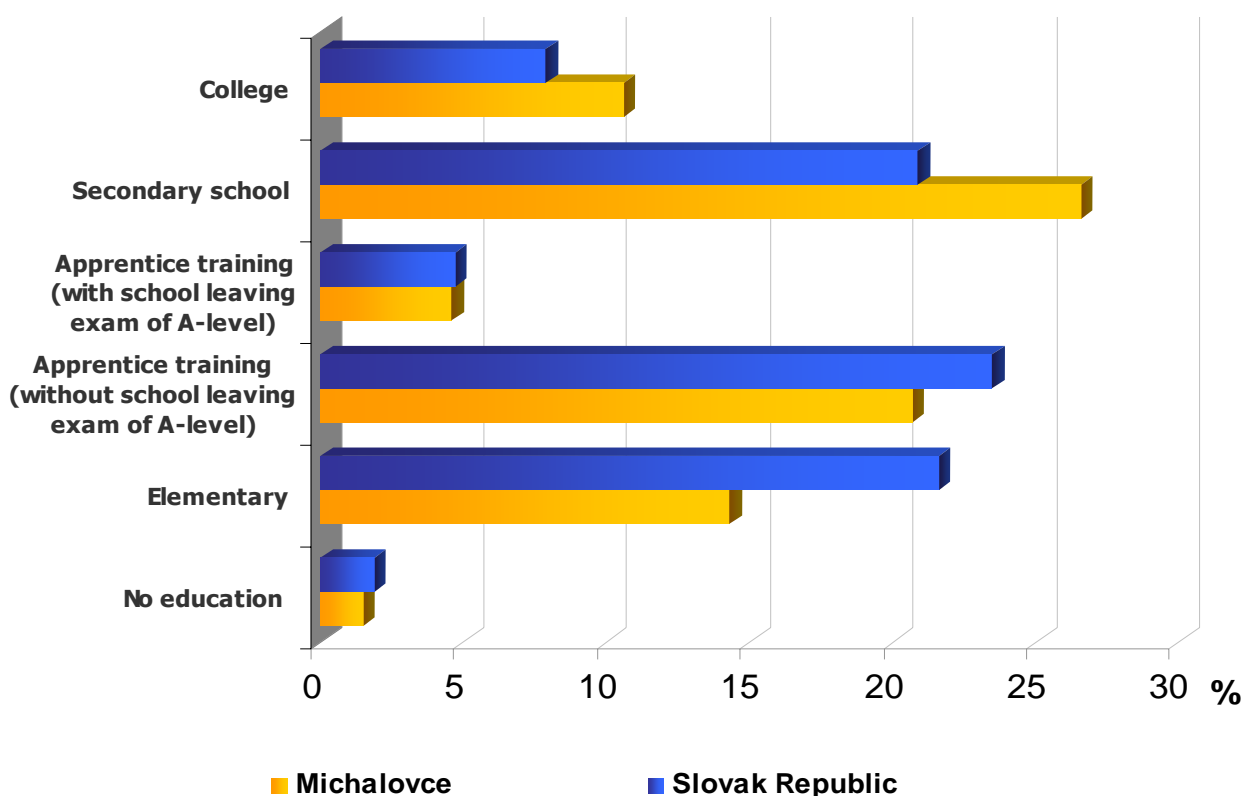
College education according to specification:	men	women	total
University	922	1 129	2 051
Technical specification	859	300	1 159
Economic specification	203	262	465
Agricultural specification	257	104	361
Others	122	79	201

(Statistical Office)

## Comparison of the structure of education of the town of Michalovce citizens and the Slovak Republic

Comparison of the structure of education of the town of Michalovce citizens and the Slovak Republic in 2012				
Level of education accomplished	Michalovce		Slovak Republic	
	Absolute figures	%	Absolute figures	%
Elementary	5 719	14,3	1 132 995	21,6
Apprentice training (without school leaving exam of A-level)	8 256	20,7	1 264 144	23,5
Apprentice training (with school leaving exam of A-level)	1 834	4,6	251 992	4,7
Secondary school	10 617	26,6	1 126 085	20,9
College	4 237	10,6	423 324	7,9
Elementary	599	1,5	101 062	1,9

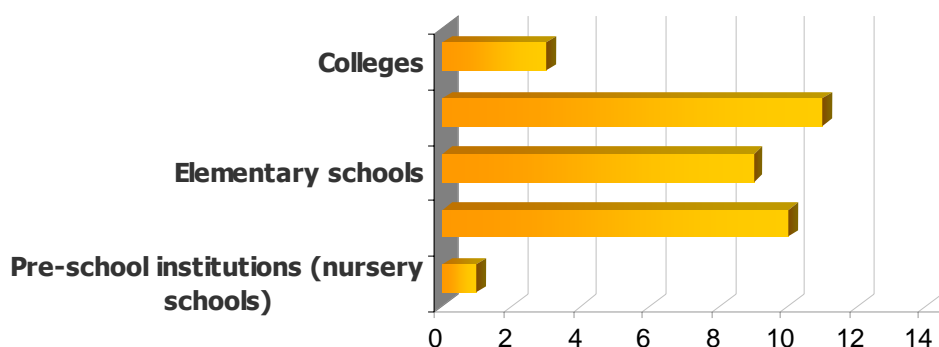
(Statistical Office)



## Infrastructure of education

Institution	Number of institutions		
	Total	State	Private / Church
Pre-school institutions (nursery schools)	1	1	-
Kindergartens	10	8	2
Elementary schools	9	8	1
Secondary schools	11	7	4
Colleges	3	3	-

(Municipal Authority data, 2012)



Secondary schools in the town of Michalovce	
1.	Grammar School of P. Horov, Masarykova Street 1
2.	Grammar School of Ľ. Štúr, Ľ. Štúr Street 26
3.	Business Academy, Kapušianska Street 2
4.	Secondary Nursing School, Masarykova Street 27
5.	Secondary School of Hotel Business and Economy, Školská Street 4
6.	Secondary Technical School, Partizánska Street 1
7.	Boarding Training Institution, Školská Street 12
8.	Catholic Secondary Technical School of St. Cyril and Metod, Tehliarska Street 2
9.	ESO Euro-school Slovakia – Private Hotel Business School, Komenského Street 1
10.	Private Secondary School of Clothing Industry, Komenského Street 1
11.	Private Hotel Academy, Masarykova Street 42

Colleges in the town of Michalovce	
1.	University of Economics in Bratislava, Faculty of Business Economy, Masarykova Street 9
2.	University of Trnava. Faculty of medicine and social work, Námestie osloboditeľov 82
3.	St. Elizabeth's College of Medicine and Social Work, Partizánska Street 23

(Municipal Authority data, 2012)

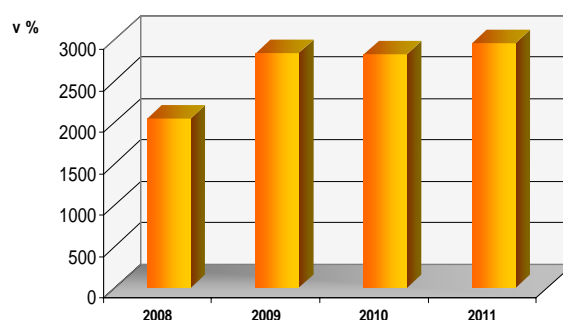
# Social services in town, healthcare, unemployment



## Unemployment and its development in town

Development of unemployment in Michalovce in 2008 – 2011				
Number of unemployed people	2008	2009	2010	2011
men	1 061	1525	1492	1542
women	983	1314	1331	1416
<b>Total number of unemployed people</b>	<b>3 469</b>	<b>2 909</b>	<b>2 490</b>	<b>2 064</b>
Unemployment rate (%)	7,71	10,71	10,94	11,47

(Central Office of Labour, Social Affairs and Family, 2012)



Number of unemployed people	2008	2009	2010	2011
Number of vacancies	174	28	38	45
Number of registered unemployed people per 1 vacancy	11,74	101,39	74,29	65,73
Average number of months spent without job	27,53	24,85	24,03	23,66

(Central Office of Labour, Social Affairs and Family, 2012)

## Unemployment structure based on the accomplished level of education

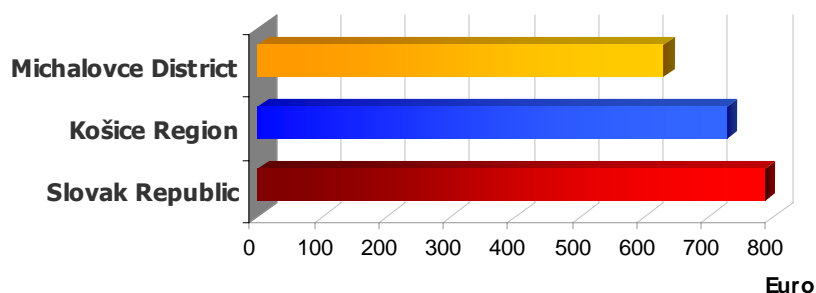
Education	2008	2009	2010	2011
0 – Without education	121	130	155	138
1 – Basic education	382	432	417	418
2 – Secondary training institutions – apprentices	584	871	779	818
3 – Secondary vocational schools – without A-level exams	7	3	4	4
4 – Secondary vocational schools – with A-level exams	227	332	322	365
5 – Grammar schools	97	134	158	167
6 – Secondary technical schools	468	678	677	686
7 – Higher secondary education	19	44	72	82
8 – Colleges	139	214	236	277
9 – Scientific education	0	1	3	3
<b>Total number of registered unemployed people</b>	<b>2044</b>	<b>2839</b>	<b>2823</b>	<b>2958</b>

(Central Office of Labour, Social Affairs and Family, 2012)

## Average monthly income of private individuals in 2012

Slovak Republic	Košice Region	Michalovce District
786 €	726 €	629 €

(Statistical Office, 2012)



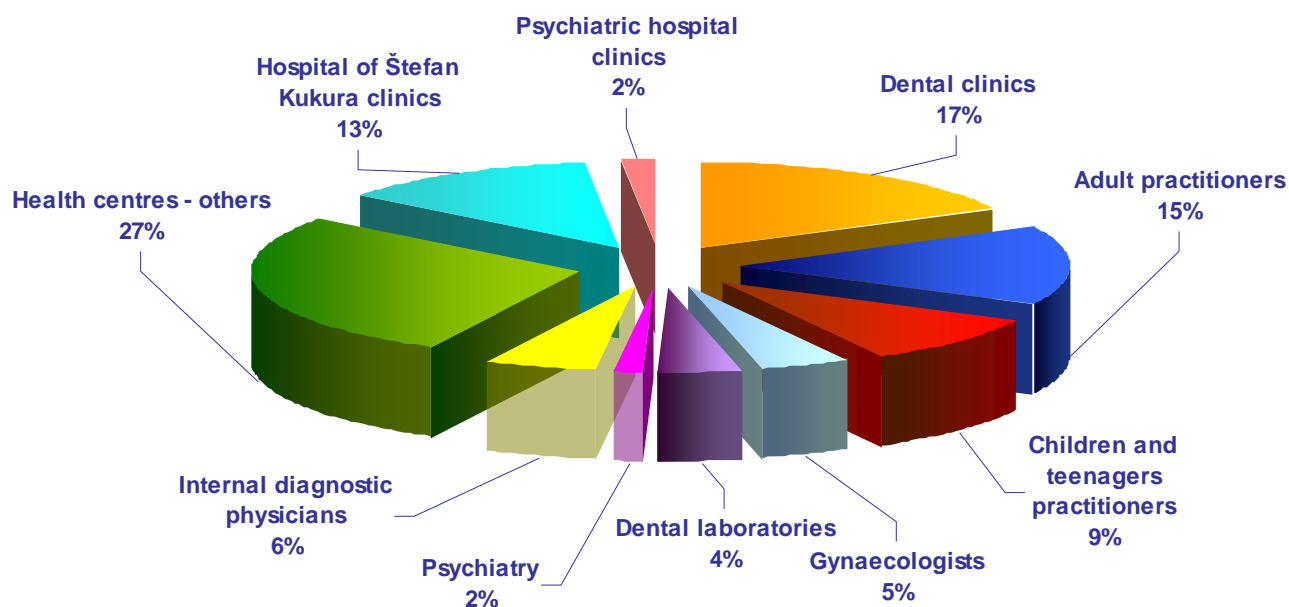
## Infrastructure of healthcare

Hospital name	Address
Hospital of Štefan Kukura, public limited company	Špitálska Street 2, 071 01 Michalovce
Psychiatric Hospital, non-profit organization	Stráňany, 071 01 Michalovce

(Municipal Authority data, 2012)

Private health centres	Number
Dental clinics	57
Adult practitioners	49
Children and teenagers practitioners	30
Gynaecologists	15
Dental laboratories	13
Psychiatry	5
Internal diagnostic physicians	18
Health centres - in00E9	91
Hospital health centres	Number
Hospital of Štefan Kukura clinics	42
Psychiatric hospital clinics	5

(Municipal Authority data, 2012)



# Companies and investors currently established in town



## Financial institutions in town – branches in Michalovce

Bank	Branch address, website
<b>VÚB Banka</b>	Námestie slobody 3, Námestie osloboditeľov 2, <a href="http://www.vub.sk">www.vub.sk</a>
<b>Wüstenrot</b>	Jaroslawská 3, <a href="http://www.wustenrot.sk">www.wustenrot.sk</a>
<b>Slovenská sporiteľňa</b>	Kostolné námestie 8, Námestie slobody 15, Továrenská 2, <a href="http://www.slsp.sk">www.slsp.sk</a>
<b>Prvá stavebná sporiteľňa</b>	Námestie osloboditeľov 59,77, Námestie slobody 7, Špitálska 5, Š. Kukuru 2, <a href="http://www.pss.sk">www.pss.sk</a>
<b>Tatra banka</b>	Jaroslavska 11, <a href="http://www.tatrabanka.sk">www.tatrabanka.sk</a>
<b>ČSOB stavebná sporiteľňa</b>	Námestie osloboditeľov 60, <a href="http://www.csobsp.sk">www.csobsp.sk</a>
<b>Československá obchodná banka</b>	Námestie osloboditeľov 60, <a href="http://www.csob.sk">www.csob.sk</a>
<b>Prima banka Slovensko</b>	Námestie osloboditeľov 62, <a href="http://www.dexia.sk">www.dexia.sk</a>
<b>Ľudová banka Volksbank Slovensko</b>	Hollého 7, <a href="http://www.luba.sk">www.luba.sk</a>
<b>UniCreditBank</b>	Námestie osloboditeľov 1, <a href="http://www.unicreditbank.sk">www.unicreditbank.sk</a>
<b>Poštová banka</b>	Kpt. Nálepku 26, <a href="http://www.postovabanka.as">www.postovabanka.as</a>
<b>OTP Banka Slovensko a.s.</b>	Š. Kukuru 14, <a href="http://www.otpbank.sk">www.otpbank.sk</a>

(Municipal Authority data, 2012)

## Commercial centres in the town of Michalovce

Name	Address
<b>Hypermarket TESCO</b>	Sobranecká cesta
<b>Hypernova</b>	Humenská cesta
<b>Kaufland</b>	Ul. Sládkovičova
<b>Lidl</b>	Ul. Hollého
<b>Zemplín Shopping Mall</b>	Ul. Sládkovičova
<b>Shopping Mall Michalovce</b>	Sobranecká cesta 5
<b>Billa</b>	Hollého 7a

(Municipal Authority data, 2012)

## Foreign investors established in the town of Michalovce

Company name	Country of origin, address, line of business and website
<b>Trancerie Emiliane Slovakia Ltd. Michalovce</b>	Italy, Továrenská 2, Michalovce 071 01, Production of moulded components for electrical motors, metal sheet cutting for the production of white goods components, <a href="http://www.tes.sk">www.tes.sk</a>
<b>BSH Drivers and Pumps Ltd. Michalovce</b>	Germany, Továrenská 2, Michalovce 071 01, Production of electrical motors, pumps for washing machines, dryers, and dishwashers <a href="http://www.bsh-group.sk">http://www.bsh-group.sk</a>
<b>Michatek Ltd. Michalovce</b>	Germany, Industrial park 1, Michalovce 071 01, Production of components for white goods, <a href="http://www.michatek.sk">www.michatek.sk</a>
<b>EBSTER SK Ltd. Michalovce</b>	Italy, Industrial park 6020/5, Michalovce 071 01, Sterilizing of healthcare products, <a href="http://www.ebster.cz">www.ebster.cz</a>
<b>Unomedical Ltd. Michalovce</b>	Denmark, Industrial park 3, Michalovce 071 01, Production of sterile single-use healthcare products, <a href="http://www.unomedical.sk">www.unomedical.sk</a>
<b>Ehlebracht Slowakei Ltd. Michalovce</b>	Germany, Továrenská 2, Michalovce 071 01, Procession of granulated plastic to injection presses, <a href="http://www.ehlebracht.sk">www.ehlebracht.sk</a>
<b>Yazaki Wiring Technologies Slovakia Ltd.</b>	Japan, Užhorodská 6080/35A, Michalovce 071 01, Production of wiring for vehicles of Ford, Daimler Chrysler, Jaguar, production of ignition cables for BMW, <a href="http://www.yazaki-europe.com">www.yazaki-europe.com</a>

(Municipal Authority data, 2012)

# Possibilities of investments and development of town and region



## Possibilities of industrial development in accordance with the Land Use Plan draft



**Locality No. 1** – situated west of the town industrial zone West - Priemyselná Street (in Land Use Plan marked as locality No. 13 – industrial park). **Possible use:** areas for industrial production, construction industry, warehouses

**Locality No. 2** - situated west of the town industrial zone West - Priemyselná Street (in Land Use Plan marked as locality No. 13 – industrial park). **Possible use:** areas for industrial production, construction industry, warehouses



**Locality No. 3** - situated west of the town industrial zone South – at Lastomírska Street, between the premises of Bel Cheese Production plant and SAD transportation company. **Possible use** in accordance with the Land Use Plan: areas for industrial production, construction industry, warehouses.



**Locality No. 4** – situated in the industrial park east of the premises of Yazaki Plant. Parcel No. p. C-KN 1530/1 has a direct connection to the state road I/50. **Possible use** in accordance with the Land Use Plan: areas for industrial production, construction industry, warehouses.



**See you  
in Michalovce ...**



**Michalovce, 2012**

**Developed by:**

**Municipal Authority Michalovce, Osloboditeľ'ov 30  
IT and Grants Department**